



# GMT MONTHLY MEMBERSHIP PROGRESS REPORT

Results as of: 5/31/2020

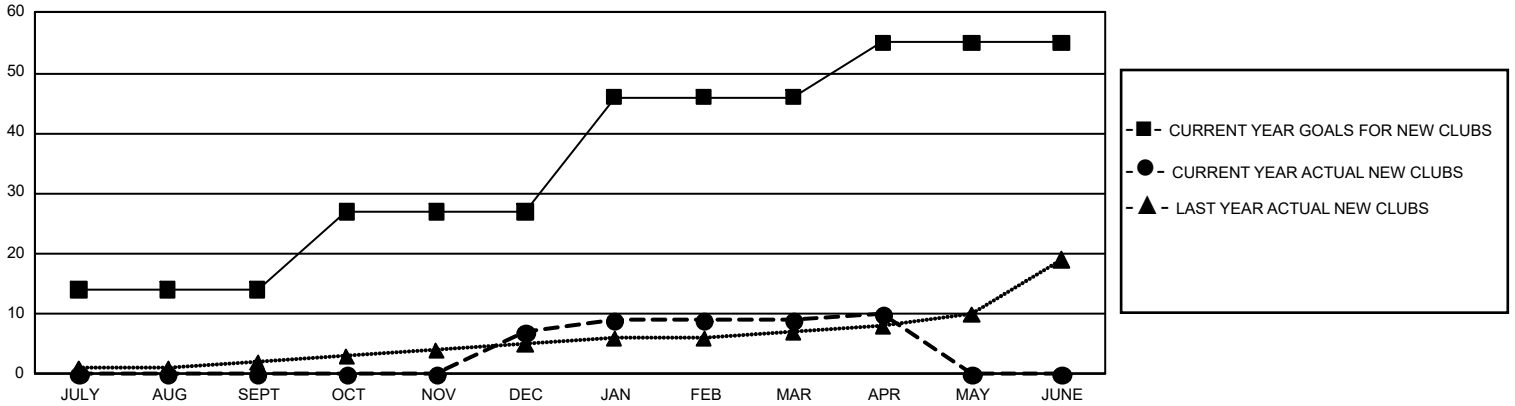
## GMT Constitutional Area 1, Group B

GMT: OPEN

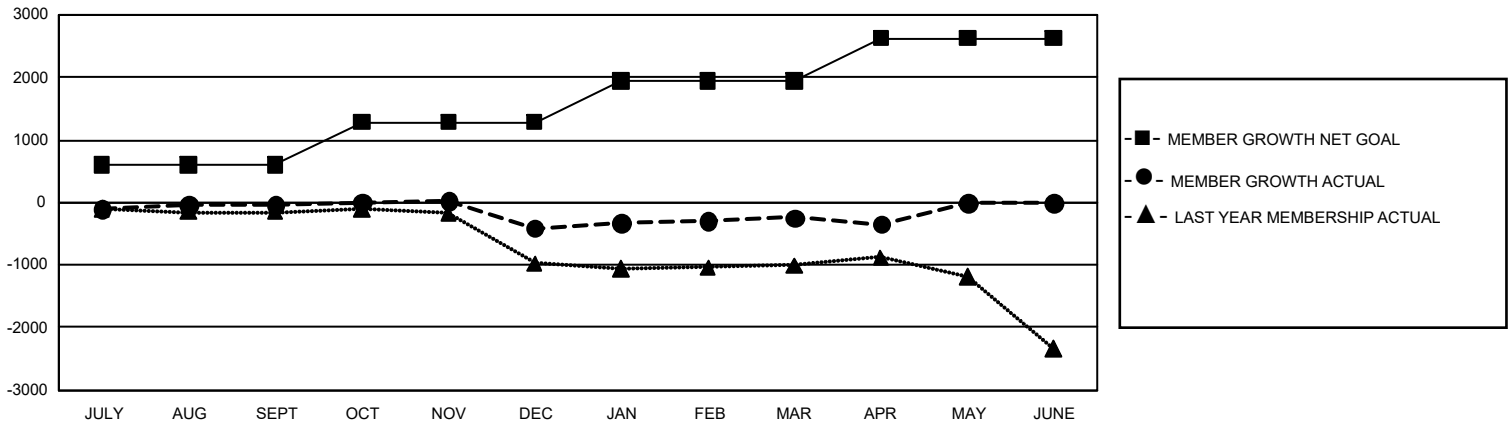
REPORT DOES NOT INCLUDE CLUBS IN UNDISTRICTED AREAS.

Clubs				Members			
RESULTS FOR 2019-2020				RESULTS FOR 2019-2020			
QUARTER	NEW CLUB GOAL	NEW CLUBS	DROPPED CLUBS	QUARTER	MEMBER GROWTH NET GOAL	MEMBER GROWTH ACTUAL	DROPPED MEMBERS ACTUAL (including transfers)
JULY/AUG/SEPT	42	0	25	JULY/AUG/SEPT	1,821	1,205	1,074
OCT/NOV/DEC	39	7	15	OCT/NOV/DEC	2,025	1,128	1,391
JAN/FEB/MAR	57	2	2	JAN/FEB/MAR	1,989	1,088	830
APR/MAY/JUNE	27	1	2	APR/MAY/JUNE	2,046	205	274

**GOALS AND ACTUAL NEW CLUBS CUMULATIVE**



**GOALS AND ACTUAL MEMBERS CUMULATIVE**



DROPPED CLUBS: 44	748 CLUBS OF 1,318 ADDED 1 OR MORE NEW MEMBERS	<b>GENDER DISTRIBUTION</b>
<b>DROPPED MEMBERS</b>	<a href="#">CLICK HERE FOR CUMULATIVE MEMBERSHIP DATA</a>	MALE            20,525 (61.06%)
DECEASED            356		FEMALE        13,092 (38.94%)
CLUB CANCELLED    294		TOTAL FAMILY UNIT MEMBERS            6,482
OTHER                2,918		FAMILY MEMBERS PAYING HALF DUES    3,373
<b>TOTAL                3,568</b>		